

N20C系列 叶片缓冲式 Vane Damper

N20C0(C1)旋转缓冲器



单向扭矩输出 Uni-Directional 扭矩曲线输出 Torque curve output 固定式 Fixed 更大扭矩负载 Increase torque 限制旋转角度 MAX. Rotation Angle <110°

§ 规格 Specifications

订货号CODE	型号Model	扭矩Rated torque	扭矩方向Direction	反向扭矩Reverse torque
2035(50)10103	N20C0(1)-R103	10±2 kgf·cm	顺向CW(R)	3 kgf·cm
2035(50)10153	N20C0(1)-R153	15±3 kgf·cm	顺向CW(R)	4 kgf·cm
2035(50)10203	N20C0(1)-R203	20±4 kgf·cm	顺向CW(R)	5 kgf·cm
2035(50)10253	N20C0(1)-R253	25±5 kgf·cm	顺向CW(R)	6 kgf·cm
2035(50)10303	N20C0(1)-R303	30±6 kgf·cm	顺向CW(R)	7 kgf·cm
2035(50)10353	N20C0(1)-R353	35±7 kgf·cm	顺向CW(R)	8 kgf·cm
2035(50)10403	N20C0(1)-R403	40±8 kgf·cm	顺向CW(R)	9 kgf·cm
2035(50)20103	N20C0(1)-L103	10±2 kgf·cm	逆向CCW(L)	3 kgf·cm
2035(50)20153	N20C0(1)-L153	15±3 kgf·cm	逆向CCW(L)	4 kgf·cm
2035(50)20203	N20C0(1)-L203	20±4 kgf·cm	逆向CCW(L)	5 kgf·cm
2035(50)20253	N20C0(1)-L253	25±5 kgf·cm	逆向CCW(L)	6 kgf·cm
2035(50)20303	N20C0(1)-L303	30±6 kgf·cm	逆向CCW(L)	7 kgf·cm
2035(50)20353	N20C0(1)-L353	35±7 kgf·cm	逆向CCW(L)	8 kgf·cm
2035(50)20403	N20C0(1)-L403	40±8 kgf·cm	逆向CCW(L)	9 kgf·cm

注：1)标注扭矩为标准负载慢落每秒钟15°，温度23°C时测定的数据；

2)可以通过变更缓冲器油脂的粘度提供特殊扭矩定制,大扭矩输出的产品,旋转轴加强铜芯。

Note:1)Rated torque measured at a speed of 15°/sec.at 23°when fall down;

2)Torque can be customized by changing the oil viscosity,Copper wire supports to strengthen the center of rotation when the object is in high pulling torque.

§ 外形尺寸Outside Diagram

- 注：1)图示旋转闭合位置为缓冲终止位置，缓冲器在此角度时扭矩输出最大，并以此位置为缓冲终止安装基准，旋转轴扁位安装基准与本体另一侧定位扁位的夹角为90°；
2)旋转轴孔和配合部件的间隙请尽量减小，如果存在间隙，旋转缓冲的速度也会受到影响；
3)缓冲器的旋转缓冲角度为110°，超过角度旋转时会损坏缓冲器本身，并请在外部设计停止定位机构。

Note:1)As pictures shown, the flat bit axis of rotation is the end position of buffering; the damper outputs the maximum torque at this position, and the buffering installation based on the flat bit axis of rotation. The installation of the axis of the flat a datum and the other side of the flat a datum of the angle is 90°;

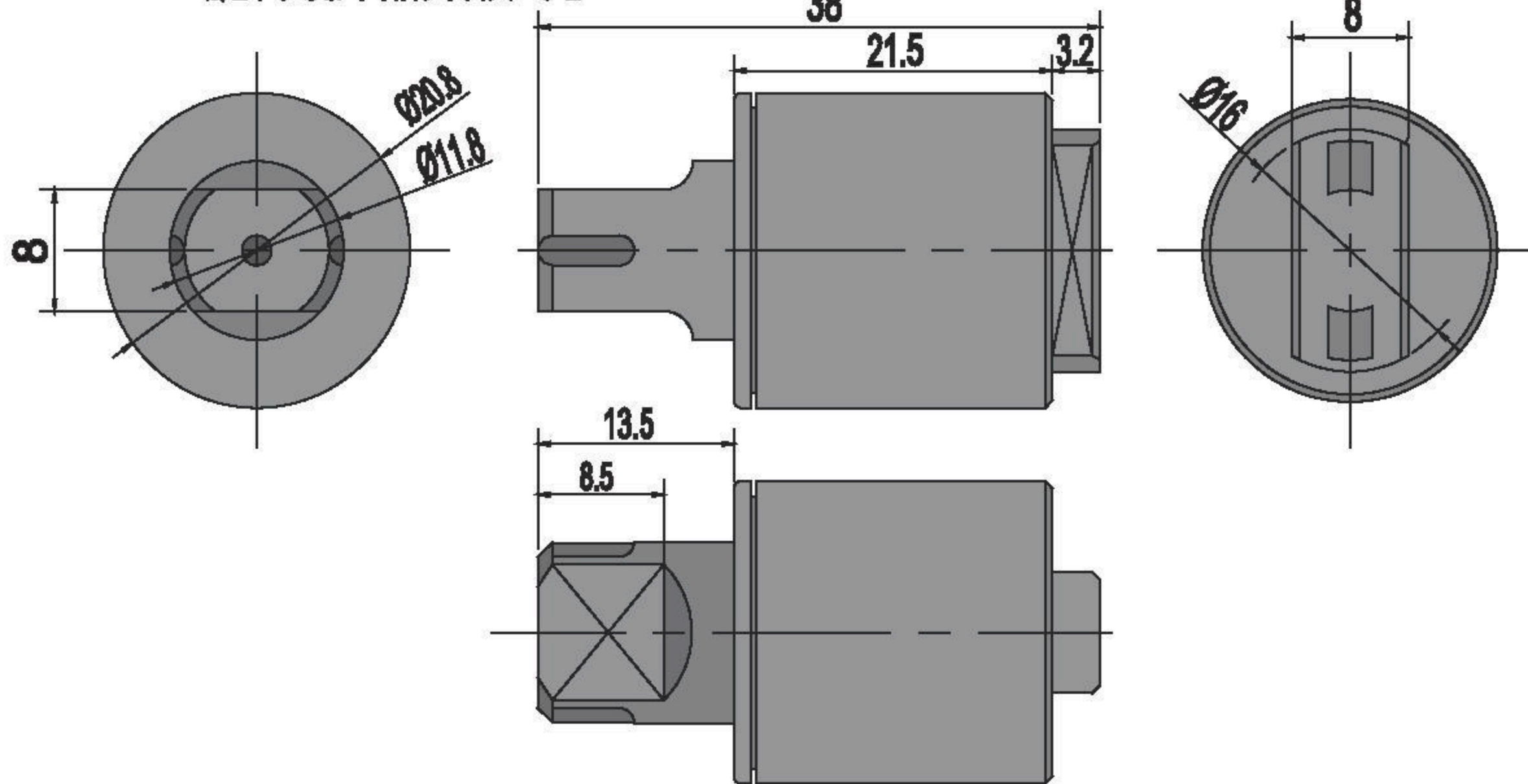
2)When connecting the rotating shaft to other parts, please ensure a tight fit between then. Without a tight fit, the lid will not slow down properly when closing;

3)The damper's working angle is 110°, as pictures shown, rotating the damper beyond this angle will cause damage to the damper. Please ensure that an external stopper is in place.

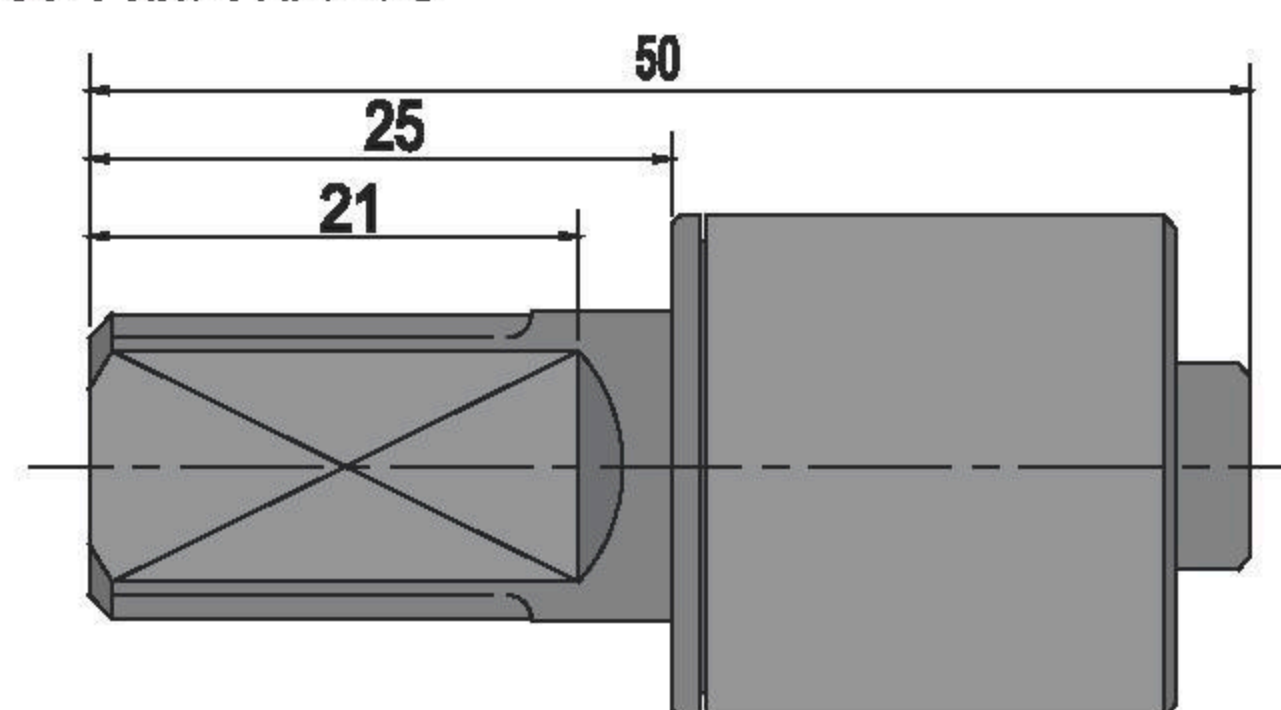
§ 性能描述Performance Description

最大使用旋转角度为Max. rotation angle : 110°
最大使用温度范围Operating temperature : -5 ~ 60°C
产品外壳和端盖的材质Body & cap material: PBT塑料
旋转轴材料Rotating shaft material: PC&ZDC
使用油Oil type : Silicone oil 硅油

N20C0旋转缓冲器外形尺寸

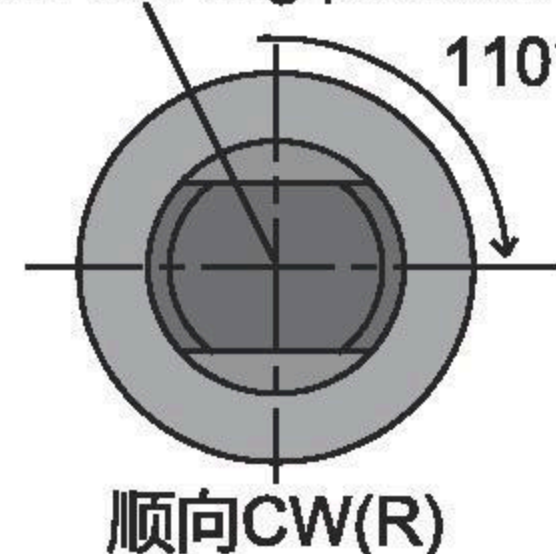


N20C1旋转缓冲器外形尺寸



旋转起始位置

Rotation starting position



顺向CW(R)

扭矩发生方向

Direction of torque generation

旋转闭合位置(基准)

Rotation completion position(Standard)

旋转缓冲器扭矩随旋转角度变化而逐渐增大

The damper torque becomes larger

旋转闭合位置侧视图

Rotation stopping side view